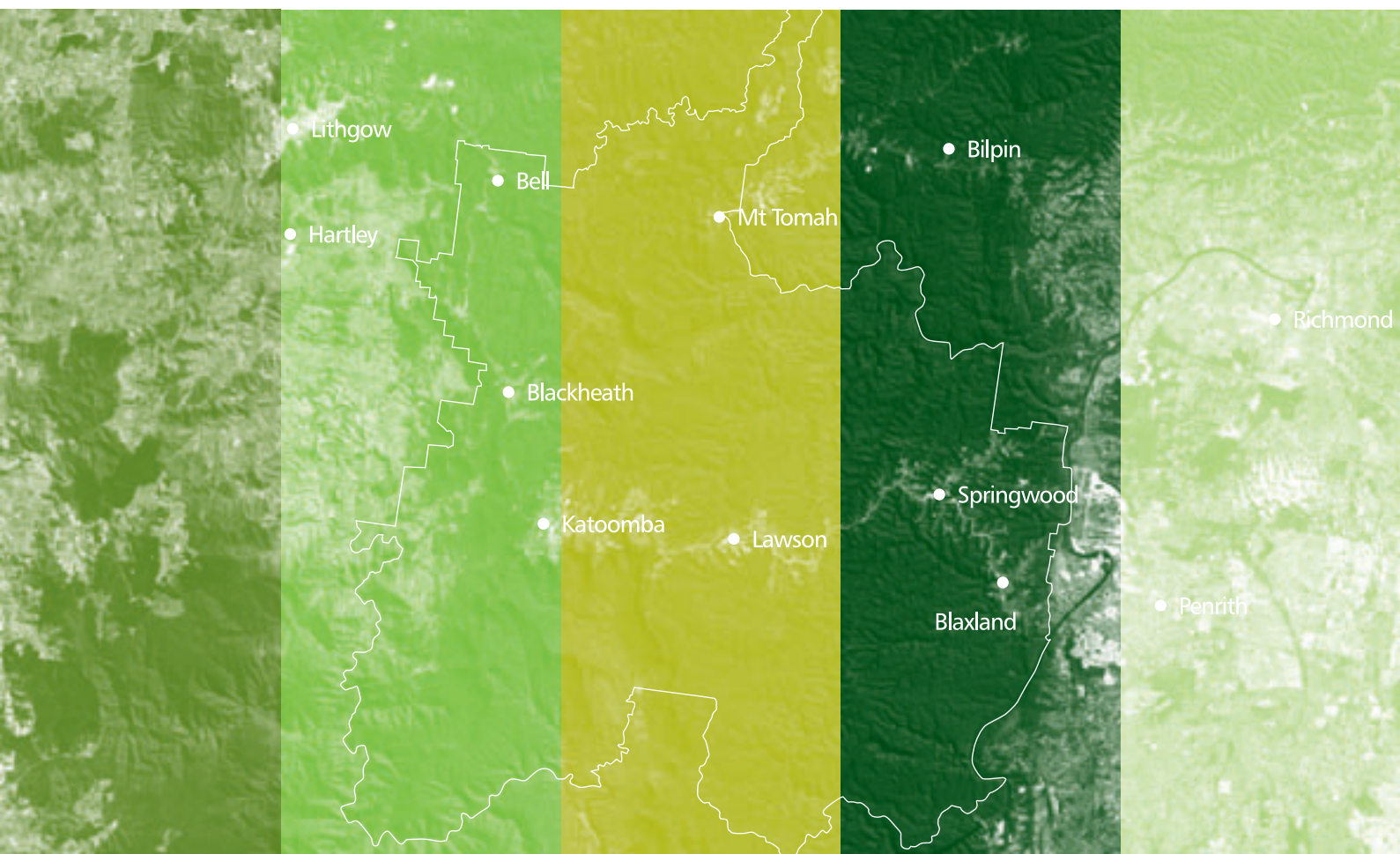




Towards a More Sustainable Blue Mountains

A 25 YEAR VISION FOR THE CITY





Working together to achieve
a more sustainable Blue Mountains





Making the Blue Mountains
a better place tomorrow than it is today...

The Vision

In 2025 we live in vibrant, healthy communities.
Our towns and villages are distinctive and contained.

We have maintained the bush between our settlements and
protected the World Heritage environment that surrounds us.

Our local economy is strong and diversified, providing employment and
educational opportunities appropriate to our location in a World Heritage area.

We promote safe accessible and environmentally responsible
ways for people to get where they need to go.

Caring for each other, we sustain our communities. We recognise
all Blue Mountains people especially our children and young people
in whom we inspire the values that create a more sustainable future.

We use our available resources wisely, ensuring their fair distribution.

We celebrate the rich creativity, culture and heritage of the Blue Mountains.

People of all cultures and backgrounds are respected and enjoy equal rights.
We acknowledge the Aboriginal presence in the Blue Mountains.

We have enhanced our Blue Mountains identity while forging strong
regional partnerships. Our civic and community leadership and governance
are inspirational – at one with community.

The Blue Mountains is recognised nationally and internationally as a centre of
excellence for learning about sustainable living and sustainable communities.

Key Directions and Outcomes for
a More Sustainable Blue Mountains

Sustainability Outcome

Blue Mountains people
living sustainably in
a City within a World
Heritage environment

LOOKING AFTER ENVIRONMENT

The Blue Mountains natural environment
is protected and conserved

The impact of existing and new development
on the environment is managed

Blue Mountains people live sustainably
in harmony with the environment

LOOKING AFTER PEOPLE

The health and well being of Blue
Mountains people are improved

Services and facilities are accessible
and fairly distributed

Blue Mountains communities
are safe, caring and inclusive

USING LAND FOR LIVING

A strong sense of local identity
and place is created

Well managed infrastructure
supports sustainable living

The liveability and vibrancy of our
towns and villages are strengthened

MOVING AROUND

Safe environmentally friendly transport
choices promote healthy lifestyles

The main Transport Corridor is a safe
and beautiful space that adds to our
local amenity and World Heritage identity

The ability of people to connect with
each other and access services is improved

WORKING AND LEARNING

The local economy is strengthened
and diversified

The Blue Mountains is a model
for sustainable business and industry

A culture of life long learning is
nurtured in the Blue Mountains

LOOKING AFTER ENVIRONMENT

We value our surrounding bushland and the World Heritage National Park. Recognising that the Blue Mountains natural environment is dynamic and changing, we look after and enjoy the healthy creeks and waterways, diverse flora and fauna and clean air. Living in harmony with the environment, we care for the ecosystems and habitats that support life in the bush and in our backyards. We conserve energy and the natural resources we use and reduce environmental impacts by living sustainably.



LOOKING AFTER PEOPLE

We value our strong connected communities that support people throughout their lives from childhood to old age. We have safe, healthy environments in which people can live, work and play. Blue Mountains people have access to an appropriate range of services and facilities. Housing that is relevant to our population is available. Young people in the Blue Mountains have hope for the future. We nurture our sense of community through interacting and helping each other.



USING LAND FOR LIVING

We use our land to live in harmony with the environment. We have created vibrant liveable places and spaces for people of all ages and abilities to meet and play. We value the distinct identities of our villages and towns and the bushland between them. Our cultural and built heritage is important. Within the capacity of our natural and built environments, we have encouraged development in larger town centres where there is access to public transport. Through innovative urban design and planning, the Blue Mountains has become a place renowned for its liveable and beautiful spaces.



MOVING AROUND

We value safe and accessible pathways of travel that improve our connections with our destinations and each other. We have choices for safe and environmentally friendly transport, including networks of walkways and cycleways integrated with reliable and accessible public transport. Through better management and creative urban design, the Great Western Highway is a safe and beautiful space that adds to our amenity and World Heritage identity.



WORKING AND LEARNING

We value business and industries that are in harmony with our World Heritage environment. We are recognised as a centre of excellence for sustainability that creates significant employment and educational opportunities. Through responsible economic development we have strengthened our local economy. We are a leader in sustainable tourism practices. Young people are attracted to work, live and study in the Blue Mountains. Building on our rich cultural landscape and inspirational natural environment, we are an exciting centre of culture and creativity.



Towards a More Sustainable Future

TAKING ACTION TO NURTURE THE ESSENTIALS THAT SUPPORT US

Taking Action

which is fair and
equitable to others
including our
children's children

which is
environmentally
responsible



which contributes
to the creation of
liveable vibrant,
creative communities
with a sense of place
and belonging

which uses
resources
efficiently wisely
and effectively

To improve our quality of **Life** and make the Blue Mountains a better place

The 25 year strategy supporting this Vision for a More Sustainable Blue Mountains is presented
in the Map for Action 2000-2025 Towards a More Sustainable Blue Mountains.
The Vision and Map are available on the website www.ourfuturebluemtns.nsw.gov.au